

How to spot the difference between the MANN+HUMMEL ProVent 200 and the ProVent copy

MANN+HUMMEL ProVent 200

Made in Germany



MANN+HUMMEL: Surface of inlet port same as ProVent body



MANN+HUMMEL: Smooth tool separation line

HP 200 Chip-It and others

Copy made in China

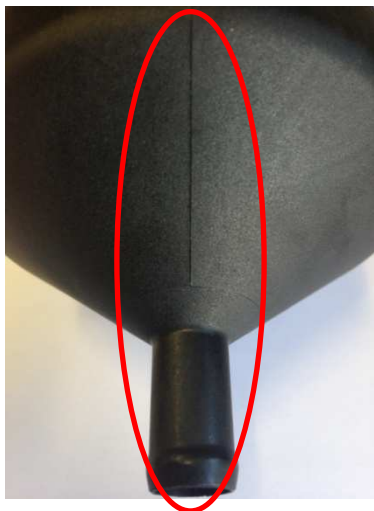


Copy: Surface of inlet port looks like polished



Copy: Re-worked tool separation line

How to spot the difference between the MANN+HUMMEL ProVent 200 and the ProVent copy



MANN+HUMMEL: Smooth tool separation line



Copy: Re-worked tool separation line



MANN+HUMMEL: Tool ejector marks almost invisible



Copy: Tool ejector marks clearly visible



MANN+HUMMEL: "OPEN" written on lid plus arrow

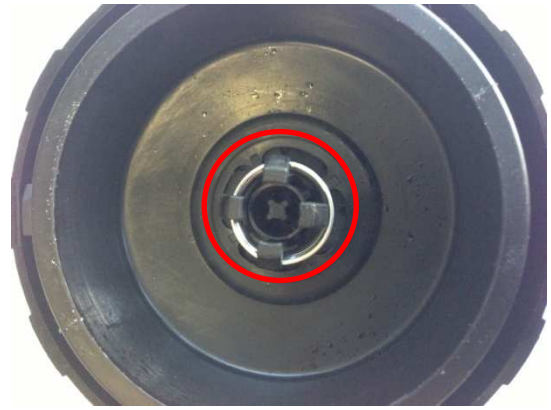


Copy: Arrow only on lid

How to spot the difference between the MANN+HUMMEL ProVent 200 and the ProVent copy



MANN+HUMMEL: Spring diameter fits latches



Copy: Spring diameter too big, unhooked on one side



MANN+HUMMEL: Spring diameter fits latches, part number, date clock and recycling logo available



Copy: Spring diameter too big, unhooked on one side, no part number, no date clock, no recycling logo



MANN+HUMMEL: Color of glue light beige, diameter of separator wrap 58mm



Copy: Color of glue white, diameter of separator wrap 53mm

How to spot the difference between the MANN+HUMMEL ProVent 200 and the ProVent copy



MANN+HUMMEL: part number on element



Copy: No part number on element